

www.ruukkiroofs.com

RUUKKI FRIGGE INSTALLATION MANUAL

INSTALLATION MANUAL

RUUKKI

RUUKKI® FRIGGE – HEART OF YOUR HOUSE

Ruukki® Frigge is modern modular steel roof with special features ensuring simple and intuitive installation. The modularity and symmetrical shape as well as specially designed components such as ridge tile and gable trim allow the choice of any installation direction, i.e. from right to left and left to right and from top to bottom and bottom to top. The Ruukki® Frigge profile also provides the possibility to mount sheets from top to bottom and bottom to top. The risk of damage during installation has been minimised due to the large support area on the battens. Special mounting recesses located in the front part of the profile ensure a stable position for the sheets with respect to each other and facilitate the placement of the screws for fastening.

For the correct installation of the Ruukki® Frigge roofing, we recommend installation on battening with wooden battens of 40 x 60 mm. Wooden battens should be dry, straight and impregnated with a fungicidal product that does not corrode the steel elements with which the battens are in contact. Regardless of the angle of inclination of the roof area, the battens must be mounted to the roof construction with a spacing of 35 cm along the batten's axis. The first batten is an exception. It must be placed in relation to the eave's batten so that the front edge of the Ruukki® Frigge roofing protrudes by about 40-45 mm beyond the eave line. (This applies in case of installation with the eaves flashing). Installation is also possible in the option without the eaves flashing – in this case the distance from the lower edge of the first batten and the upper edge of the second batten must be approx. 24 cm (see Fig. 5). In order to ensure adequate support at the eave's edge, the first batten must be mounted lengthwise. Before installing the sheets, you need to level the battens to ensure the desired visual effect of the roofing. We recommend installing Ruukki® Frigge using TORX 4.8 x 35 mm mounting screws for wooden battens, and joining the sheets using 4.8 x 20 mm TORX cladding screws that are screwed in the special recess places.

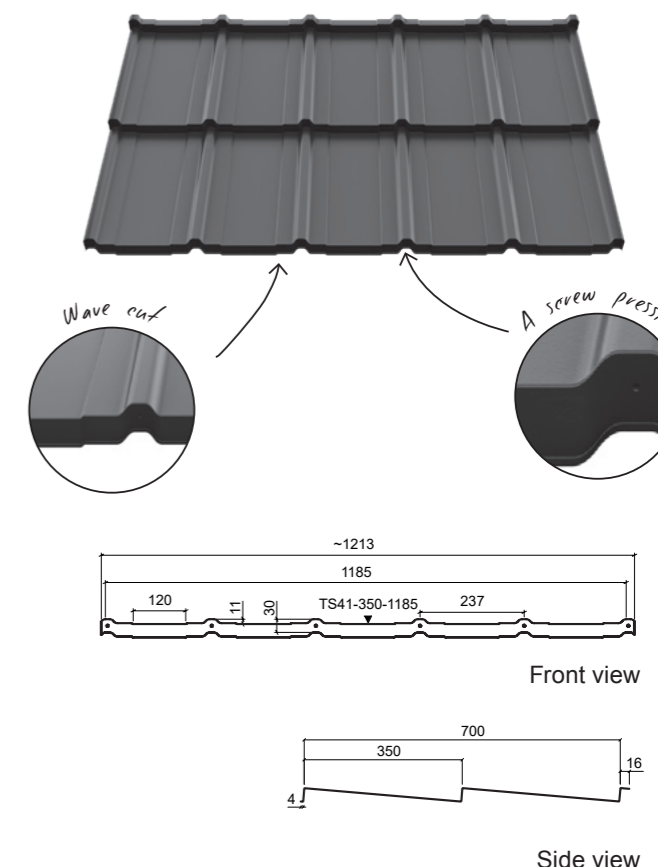
The installation methods given in these instructions are for general guidance only. The specific installation method may differ slightly from the description in the instructions depending on the roof type or installation country. For special instructions, updates and other installation instructions, please visit our website www.ruukkiroofs.com.

To follow the general installation instructions, follow the instructions of the designer or contact Ruukki Technical Support.

Specifications

Product

| | |
|-----------------------------|---------------------|
| Name | Ruukki® Frigge |
| Code | TS41-350-1185 |
| Profile height | 41 mm |
| Module length | 350 mm |
| Effective width | 1,185 mm |
| Total width | 1,213 mm |
| Effective length | 700 mm |
| Total length | 720 mm |
| Effective sheet area | 0.83 m ² |
| Minimum pitch | 14° |
| Batten spacing | 350 mm |
| Sale unit | pcs. |
| Number of sheets per pallet | 200 pcs. |



Material

| | |
|------------------------|-------------|
| Galvanised sheet steel | PN-EN 10346 |
| Coated sheet steel | PN-EN 10169 |

Tolerance

| | |
|----------|-------------|
| Product | PN-EN 508-1 |
| Material | PN-EN 10143 |


Colours

Black, Anthracite, Graphite, Chocolate Brown, Dark Brown, Brick red, Cherry red

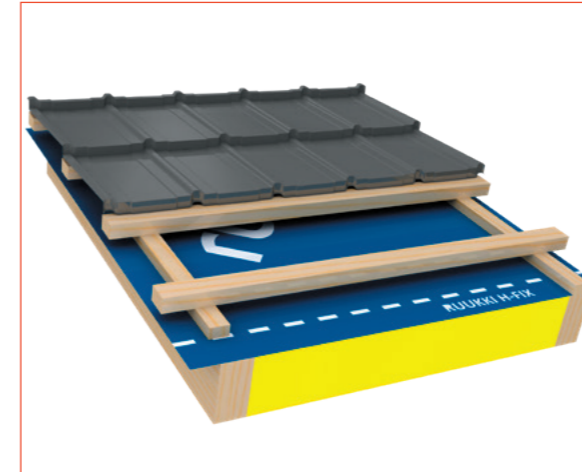
Material Specifications

| Quality class | Nominal thickness (mm) (PN-EN10143) | Weight (kg/ m ²) | Coating | Minimum mass of zinc (g/m ²) |
|----------------|--|---------------------------------|-------------------------|---|
| Ruukki 50 Plus | 0.50 | 4.3 | GreenCoat Pural BT matt | 275 |
| Ruukki 40 | 0.50 | 4.3 | GreenCoat Crown BT | 275 |
| Ruukki 30 matt | 0.50 | 4.3 | Polyester Rough matt | 275 |
| Ruukki 30 | 0.50 | 4.3 | Polyester | 275 |

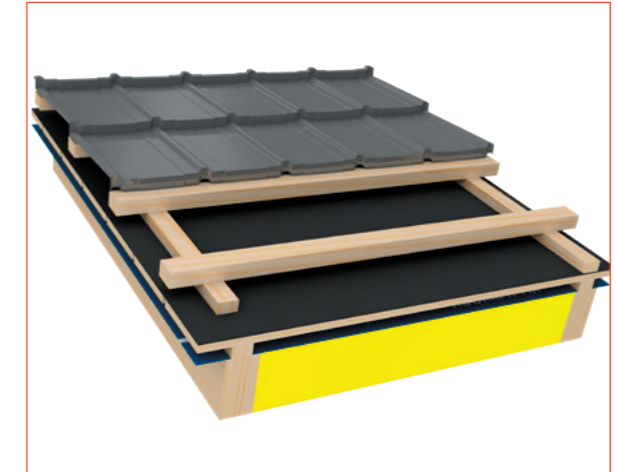
Basic accessories

| Name | Product image | Name | Product image |
|--|---|---|---|
| Ridge tile for Ruukki® Frigge Length = 2,000 mm |  | Roof bridge |  |
| Verge trim for Ruukki® Frigge Length = 2,000 mm |  | Snow barrier |  |
| Siba rainwater system |  | Sanitary chimney FLOW ø 110 |  |
| Ventilation chimney FLOW ø 160 |  | Ruukki Ridge Roll ridge and corner ventilation belt RA3VRF |  |
| TORX screw |  | H-Fix roof membrane |  |
| Soffit |  | Straight plate for special parts |  |

1. Standard layer system



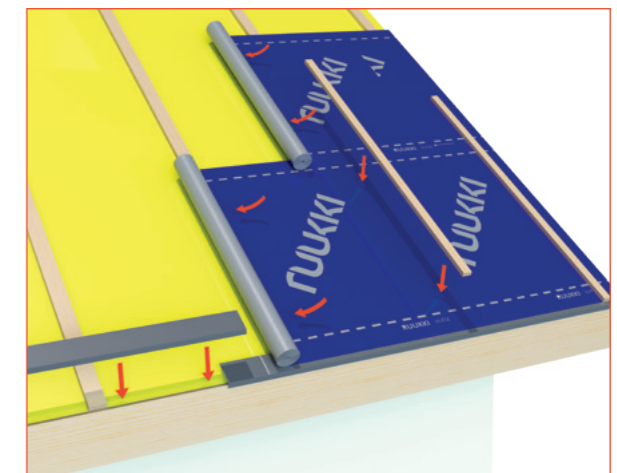
2. System on sheathing



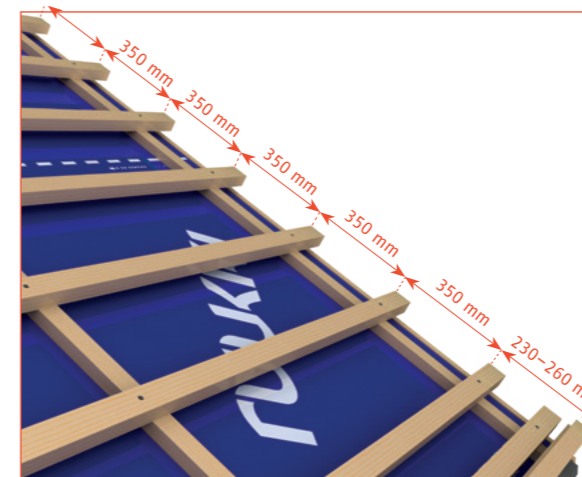
3. System with roof truss insulation



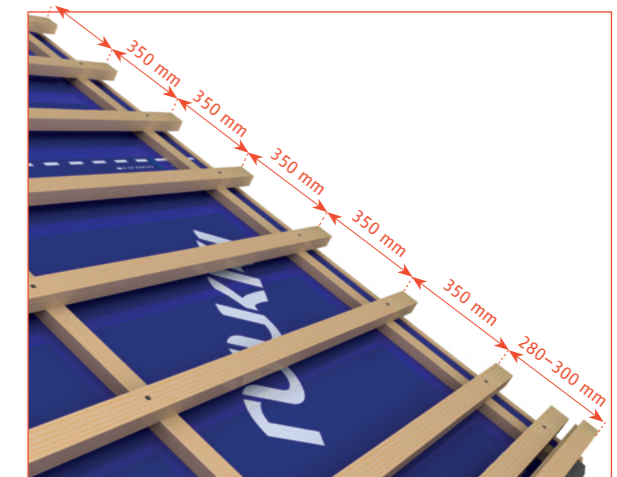
4. Installation of vapour permeable membrane



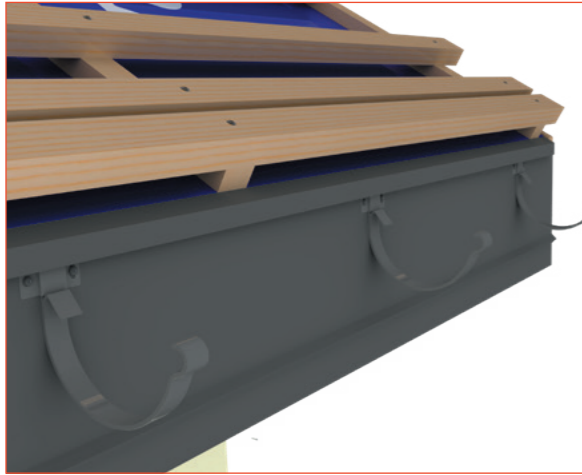
5A. Installation of wooden battens without eaves flashing



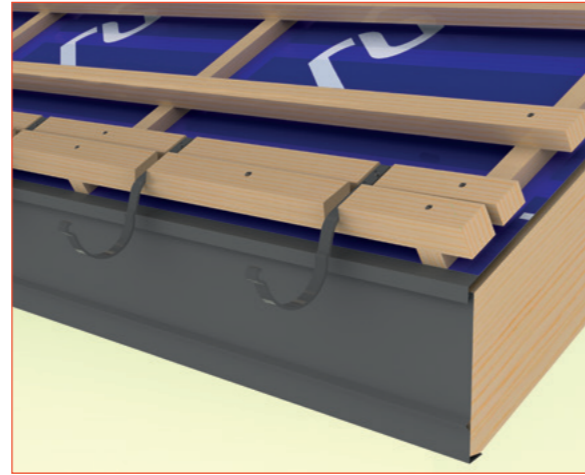
5B. Installation of wooden battens with eaves flashing



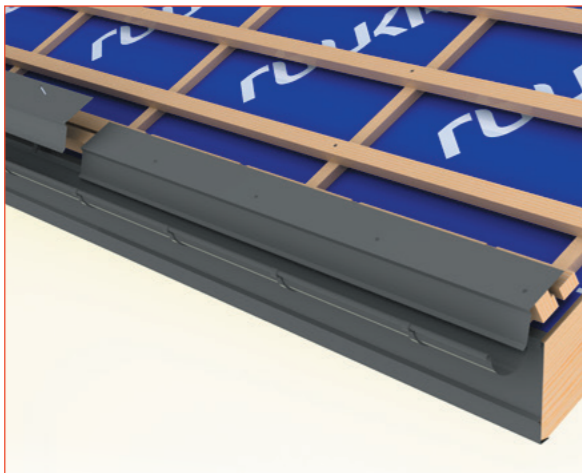
6. Installation of short brackets



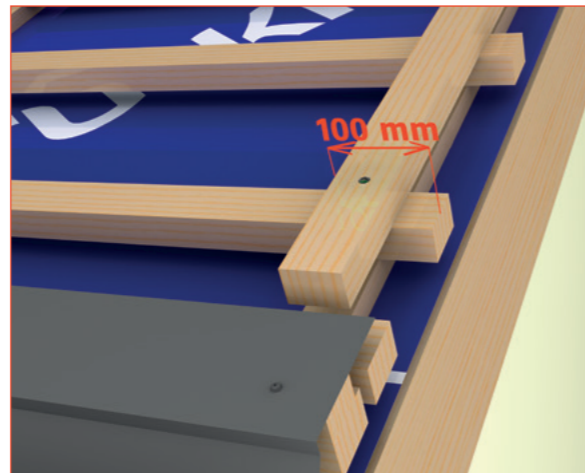
7. Installation of long brackets



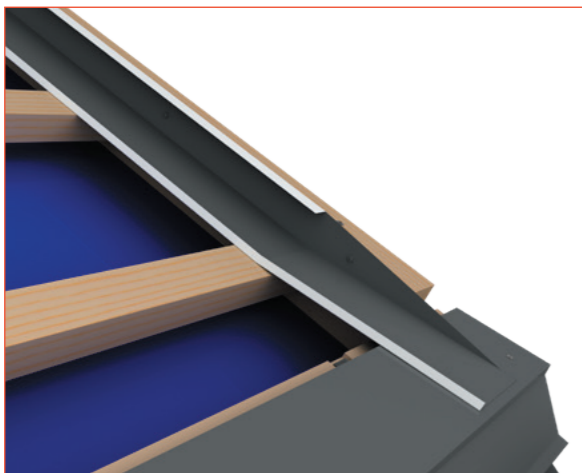
8. Installation of eaves flashing



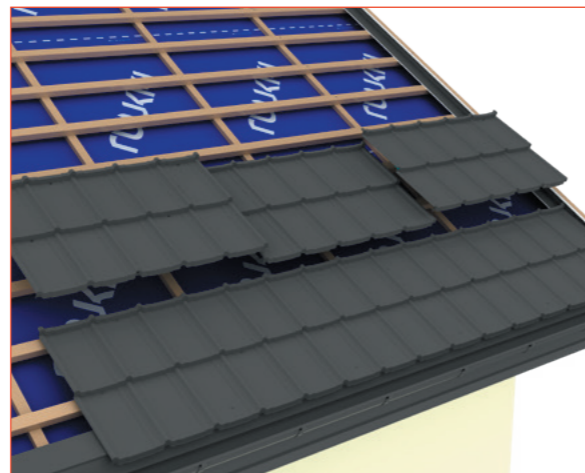
9. Installation of trim batten



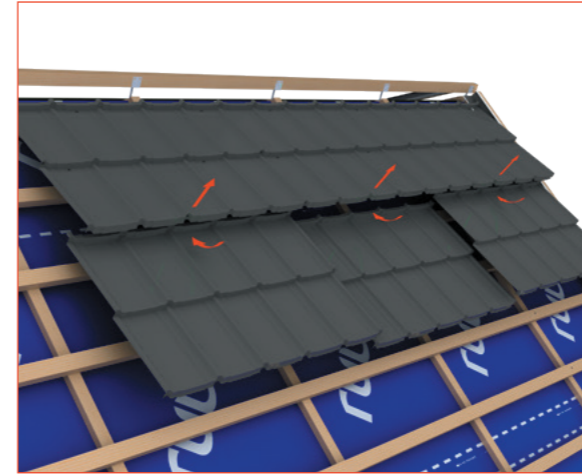
10. Installation of the lower part of the verge trim *



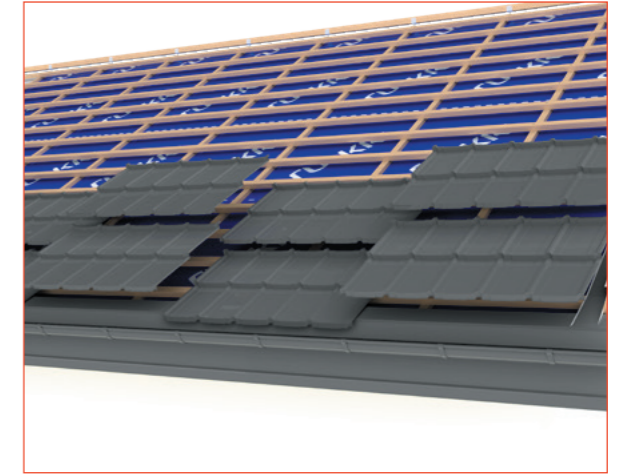
11. Installation of panels from the eaves side



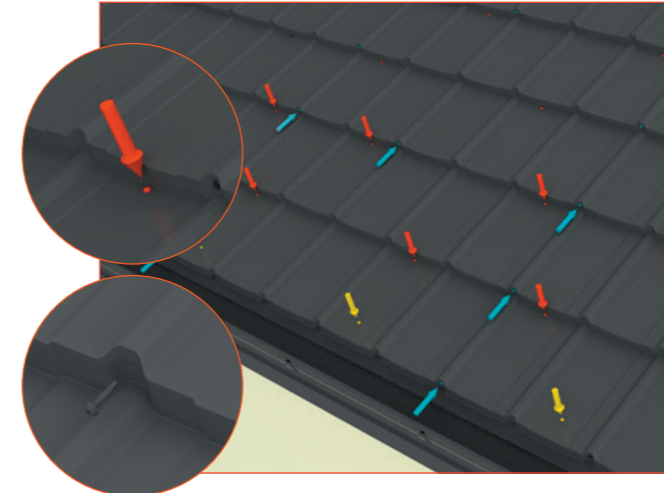
12. Installation of panels from the ridge



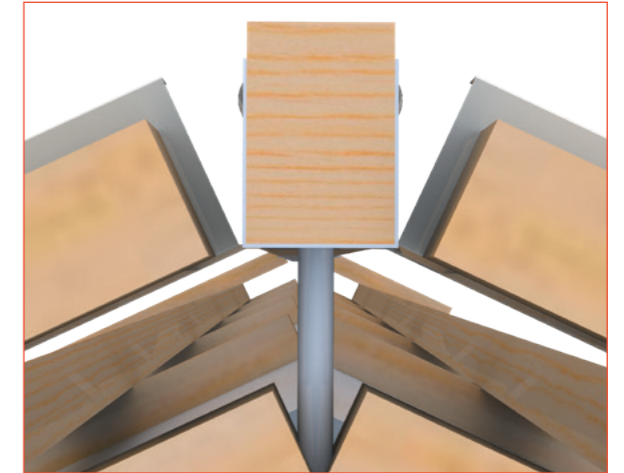
13. Correct arrangement of panels **



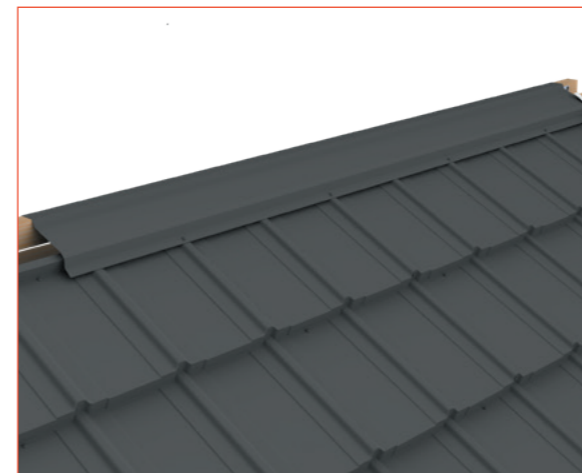
14. Installation of panels using screws



15. Installation of ridge board *



16. Installation of ridge cap *



17. Installation of the upper part of the verge trim *



* The option for Monterrey roofs can also be used for installation of ridge cap and verge trim (see Installation manual for this roofing).

* The option for Monterrey roofs can also be used for installation of ridge cap and verge trim (see Installation manual for this roofing).

** If you do not want the corners of four sheets to meet at one place, you can move every second row horizontally by the module width or by half of the sheet.

The producer reserves the right to make changes in colours, patterns and sizes of presented products.

RUUKKI
Building your tomorrow.

Ruukki Construction Oy, Jonkankatu 4, P.O. Box 677, FI-20361 Turku,
Finland, Tel. +358 (0) 20 59 127, www.ruukkiroofs.com

Copyright © 2019 Rautaruukki Corporation. All rights reserved. Ruukki, Rautaruukki, Building your tomorrow,
and Ruukki's product names are trademarks or registered trademarks of Rautaruukki Corporation, the subsidiary of SSAB.